



*We get things moving*

## *Tradition meets innovation*

The KULI Hebezeuge name is a synonym for expertise and experience in the design and manufacturing of lifting equipment for nearly 100 years. In all this time, reliability and proven technology have always been essential aspects of the many tens of thousands of KULI products performing lifting tasks in more than 120 countries around the globe – day by day, and often under the most demanding conditions.

In many cases, they have been working continuously for more than 40 years.

## *Made in Germany – in every respect*

As a German family owned company, we offer an extensive portfolio of lifting equipment manufactured in our two factories in Remscheid. We also source our raw materials and accessory components almost exclusively from Germany. Our customers can rely on our promise of excellence when we say: KULI lifting equipment – Made in Germany.



Dr.-Ing. H. Oliver Kempkes, Dipl.-Ing. Heinz Helmut Kempkes



Our strengths | 4 – 5



Production | 6 – 9



Gantry cranes | 10 – 11



Bridge cranes | 12 – 17



Electric hoists | 18 – 21



Crane components | 22 – 25



Special solutions | 26 – 27



Add-on equipment | 28 – 29



Certified services | 30 – 31



## *We deliver only the best*

### *Safety is our utmost priority*

For us, quality is a way of life – for all our employees and in every stage of production. This is our guiding principle. Guaranteeing maximum safety defines what we do and is an essential element of our corporate philosophy. For us, EU directives and DIN/ISO or FEM standards create the basis for the quality assurance processes we employ to check the reliability of every component of every product that leaves our factory. With this in mind, every one of our products is subjected to extensive and fully-documented endurance testing in compliance with internal safety requirements that often exceed applicable industry standards.

### *Robust endurance – we set industry standards*

Precision engineering of all components and extremely robust construction are decisive factors in ensuring the safety, reliability and long-service life of our lifting equipment. Our components are made larger and thicker than those of most competitors to ensure endurance under the often harsh demands and extreme environmental stress encountered in everyday working conditions. Longer operational lifecycles and minimised downtimes confirm our engineering philosophy.





### *Maximum performance – minimum headroom*

The space we save for you reduces your costs. The compact dimensions of our electric wire rope hoists enable minimal headroom between crane rails and roof. We even customise the crane girders to individual situations to ensure the best headroom utilisation. The result: optimum workplace configuration.



### *Planetary gears – strong and safe*

Offering greater safety, smoother running and less wear in comparison with the usual spur gears, our planetary gears establish a powerful and compact connection between the motor and the rope drum. Here, as with other components, we have developed a modular system that enables us to offer a broad spectrum of lifting capacities from 1 to 125 tonnes with relatively few components. Thanks to production in our own factory, we can also guarantee consistently high quality.



### *Motors – made to measure*

Why do we build our own motors? Building our own motors enables us to perfectly match them to all other crane components to guarantee highest levels of safety and reliability. In addition to this, we precisely match the motor windings to local power supplies to ensure optimum running and safety reserves, even in unstable power grids.



### *Rope drums – maintenance-free*

Our rope drums are manufactured exclusively from seamless steel tubes with grooving machined in our own production facilities. This enables us to quickly respond to specific needs regarding rope length and drum dimensions and guarantees considerably longer rope life. Direct drum drive avoids the need for additional pinions and unnecessary maintenance work.

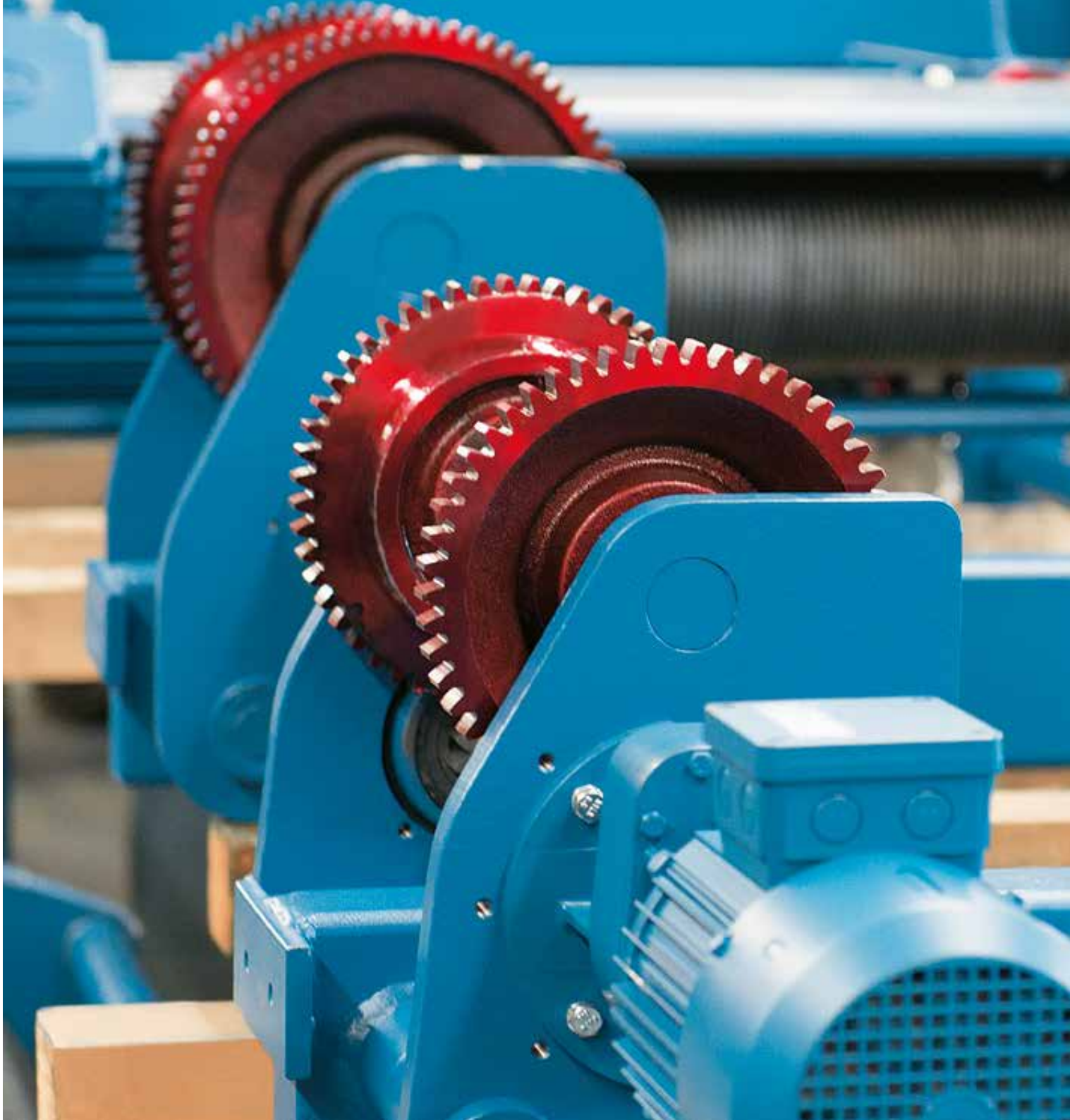




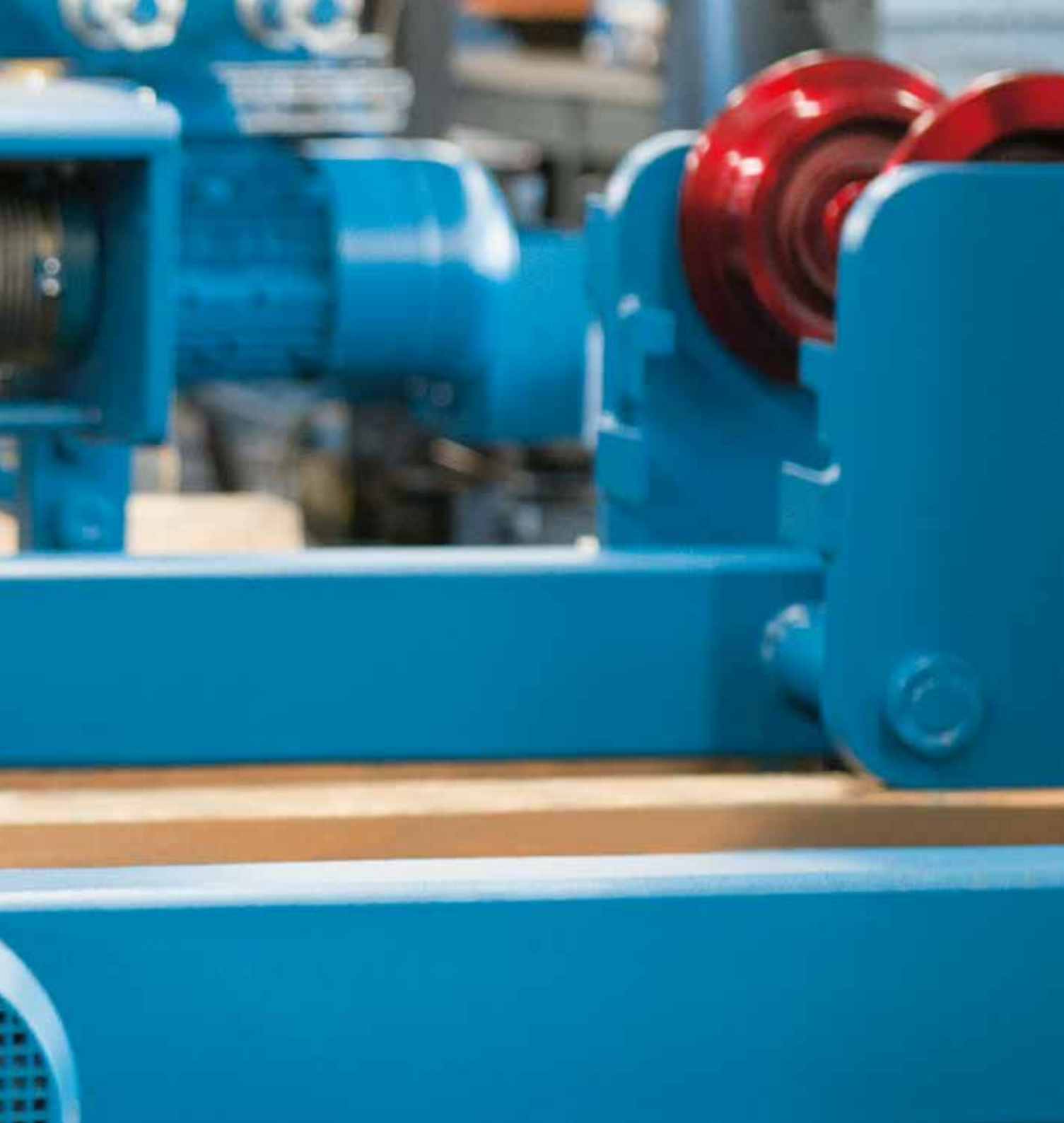
## *We have a passion for perfection*

Every day, motivation inspires our employees to give only their best. It is their hard work, expertise and dedication that unites proven crane construction with technical perfection.



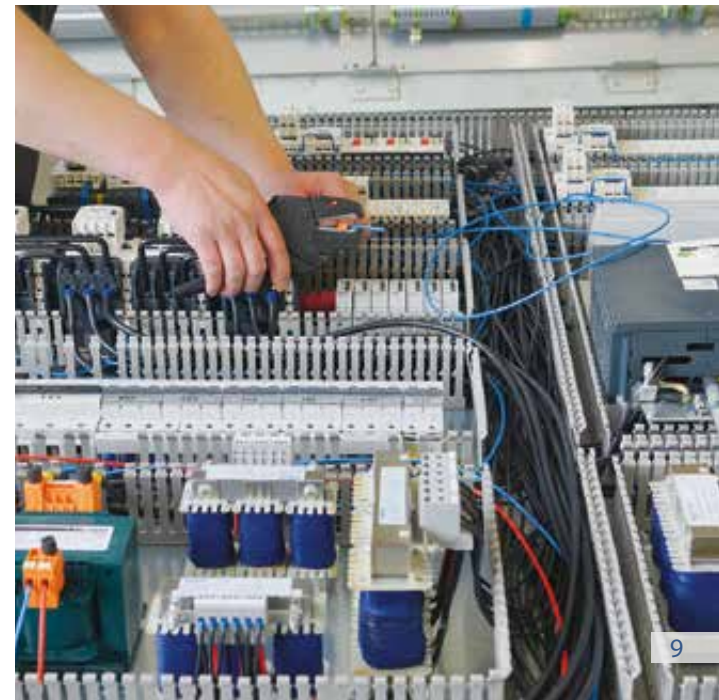






## *Flexible series production*

Customised products in series production? Thanks to our proven components, we can design products to meet specific needs at short notice. This means that you enjoy the reliability and cost-benefits of series production and the advantages of customisation to fulfil special requirements.





**KULI** hebezeuge  
HELMUT KEMPKE

2x5t

**KULI** hebezeuge  
HELMUT KEMPKE



2x5t

**KULI** hebezeuge  
HELMUT KEMPKE

hebezeuge  
HELMUT KEMPKE

KULI hebezeuge  
HELMUT KEMPKE

KULI hebezeuge  
HELMUT KEMPKE



**RULI** hebezeuge  
HELMUT KEMPKES  
REMSCHEID

6300 kg

**RULI** hebezeuge  
HELMUT KEMPKES  
REMSCHEID

6300 kg

**RULI** hebezeuge  
HELMUT KEMPKES  
REMSCHEID



## *KULI bridge cranes*

### *Modular concept – the perfect solution*

Our building block system: many standardised components can be individually combined for a wide range of different applications, shop floor layouts and working environments.

This enables us to realise crane systems with lifting capacities from 1 to 200 tonnes with a minimum of specialised parts. Thanks to components 'off-the-shelf' and optimised cost structures, this offers you the major advantages of shorter delivery times at reduced invests.

Whether you order a gantry crane, a single- or double girder EOT crane, a wall-mounted travelling crane or a suspension crane from us, we can always draw on an extensive range of components produced in our own factories. In the planning phase, our activities are focused not only on safety, but also on cost-effectiveness. For instance, we determine the optimum balance between minimum static deflection and the weight of the supporting structure. At the same time, our engineers calculate the design of the crane to ensure that wheel loads transferred to constructional elements of the place of installation are kept as low as possible. Further options positively influence the structural stability of your building, e.g. by damping potential vibrations.

All our products fulfil the criteria of German accident prevention regulations, applicable DIN standards, FEM rules, EN/ISO standards and many other international standards and requirements.

KULI Cranes – everything you need for a firmly founded process chain.



**HULI** Hebezeuge  
HELMUT KEMPKES  
REMSCHED

20t

**HUI hebezeuge**  
HELMUT KEMPKES  
REMSCHNID

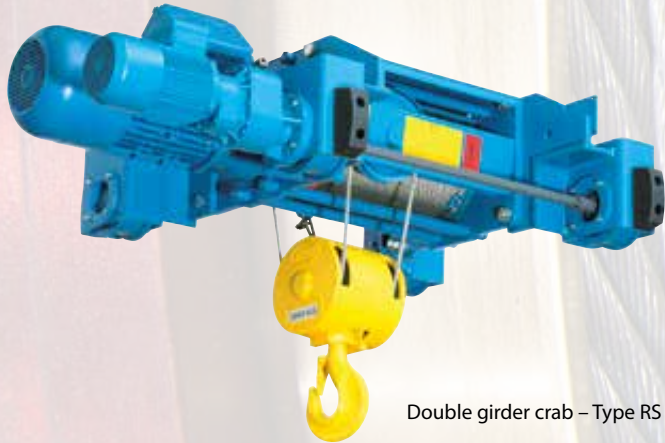




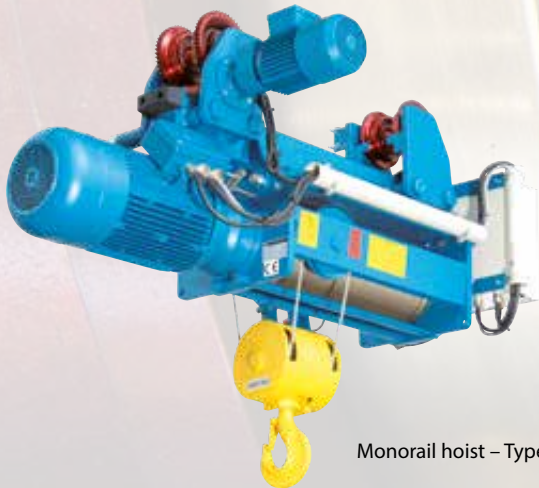




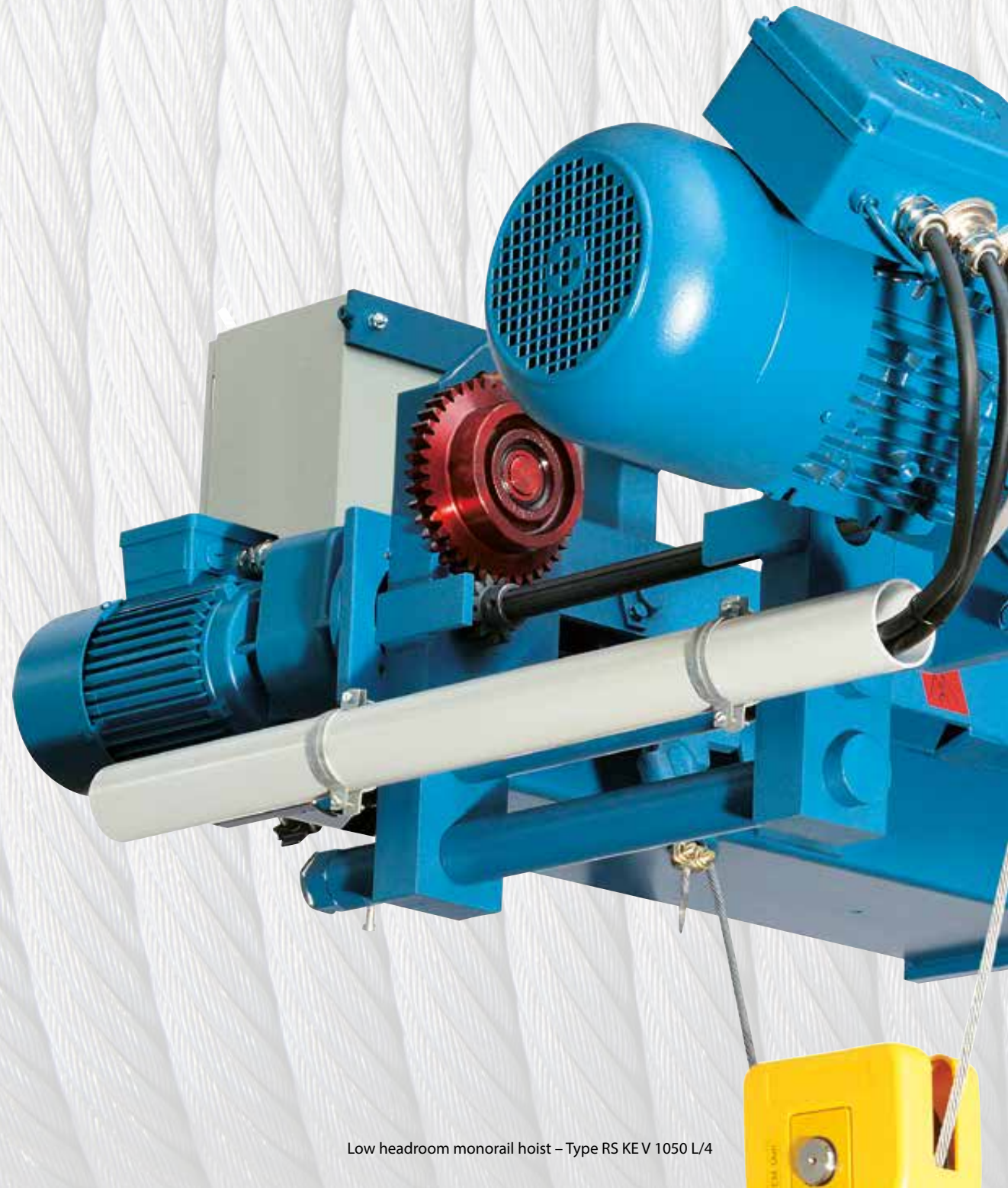
Double girder crab – Type RS ZE X 4250 L/4



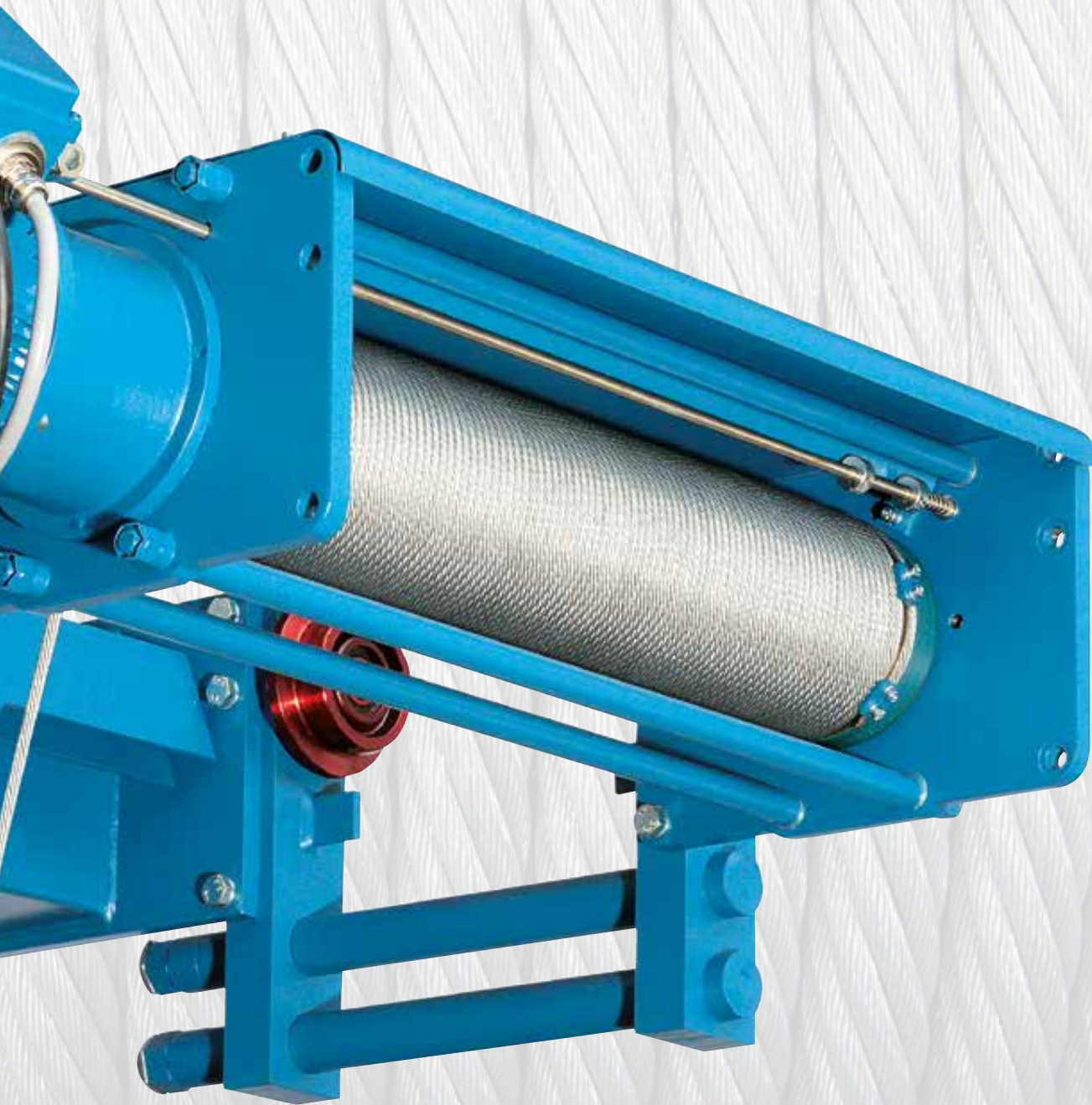
Double girder crab – Type RS ZE V 2050 L/4



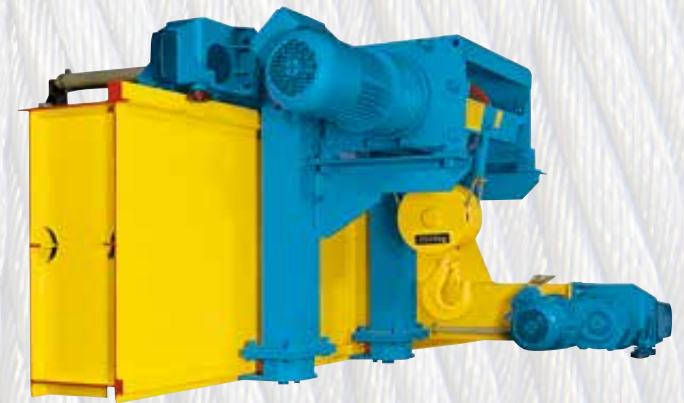
Monorail hoist – Type RS EE V 2080 L/4



Low headroom monorail hoist – Type RS KE V 1050 L/4



Foot-mounted hoist – Type RS FV 3100



Cantilevered crab – Type RS WE U 3100 L/4



Double girder crab in twin design – Type RS ZE W 22063 L/4

## *KULL electric wire rope hoists RS series*

### *Maximum technology at minimum space*

#### **Foot-mounted hoist, Type "RS F"**

As a foot-mounted version of the KULL electric hoist, the RS F is ideal for nearly all situations where loads, machinery or system components need to be lifted or pulled. The universality is increased by the fact that the foot-mounted hoist can be rotated around the drum axis into any desired position.

#### **Monorail hoist, Type "RS EE"**

The standard version for single-girder cranes and monorail tracks. Eight wheels are used as standard for loads above 10 t, resulting in lower wheel loads and permitting thinner flanges. This hoist can also be fitted with a trolley for curved tracks.

#### **Low headroom monorail hoist, Type "RS KE"**

The particularly compact hook approach allows maximum utilisation of available building height in almost all working scenarios.

#### **Double girder crab, Type "RS ZE"**

The practical and maintenance-free design offers optimum dimensions for all double-girder cranes. Up to 63 tonnes on four falls wire rope: the long-standing benchmark standard for compact class hoists.

#### **Cantilevered crab, Type "RS WE"**

Features special design for use in areas with particularly limited clearance.



Double girder crab – Type RS ZE W 9630 L/4



**KULI** hebezeuge  
HELMUT KEMPKE

## *KULI electric chain hoists*

### *Lifting and loading everywhere*

KULI electric chain hoists can be found in almost all industrial scenarios in which loads need to be moved. In addition to our electric wire rope hoists for heavier loads, this product portfolio covers the range of lifting capacities from 125 to 5,000 kg.

The areas of use for KULI electric chain hoists are as diverse as the range of tasks they fulfil. The robust, almost maintenance-free design and simple, safe operating make them valuable helpers, also where only low headroom is available.

All KULI lifting equipment is subjected to fully-documented, exhaustive testing programmes. To ensure maximum safety, we test our products under conditions that go far beyond the limits of approved operating criteria.

## *KULI Crane components*

### *Reliability – manufactured by KULI*

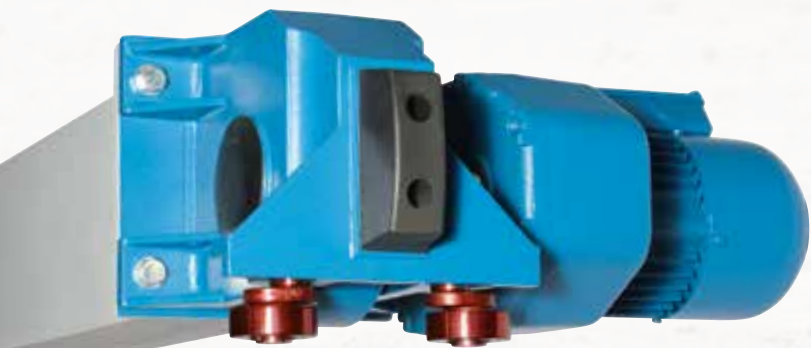
Everything we make in our own factories is manufactured with particular care. In line with this principle, all system-relevant components have been made in our own production facilities in Remscheid for generations. We therefore have complete control over our promise of reliability and delivering the best – a promise that is further supported by constant quality assurance and process monitoring procedures. This also applies to KULI crane components.

In KULI KS wheel blocks, flanged wheels guarantee precise track guidance, particularly in the case of small spans and straight crane tracks. Our K-series wheel blocks are employed for larger spans and offer the benefits of lower wheel loading and practical correction options. These wheel blocks are therefore particularly suitable for the modernisation of existing lifting equipment. Adjustable guide rollers ensure secure travel, low wear and the necessary flexibility, also on existing tracks installed many years ago. Both designs developed by us, K and KS wheel blocks, feature integrated drive units.

Controls and control cables with all relevant components can be planned and installed by us according to your needs.



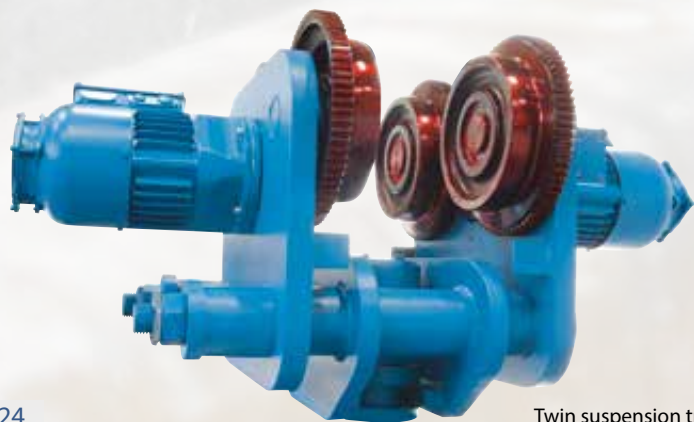




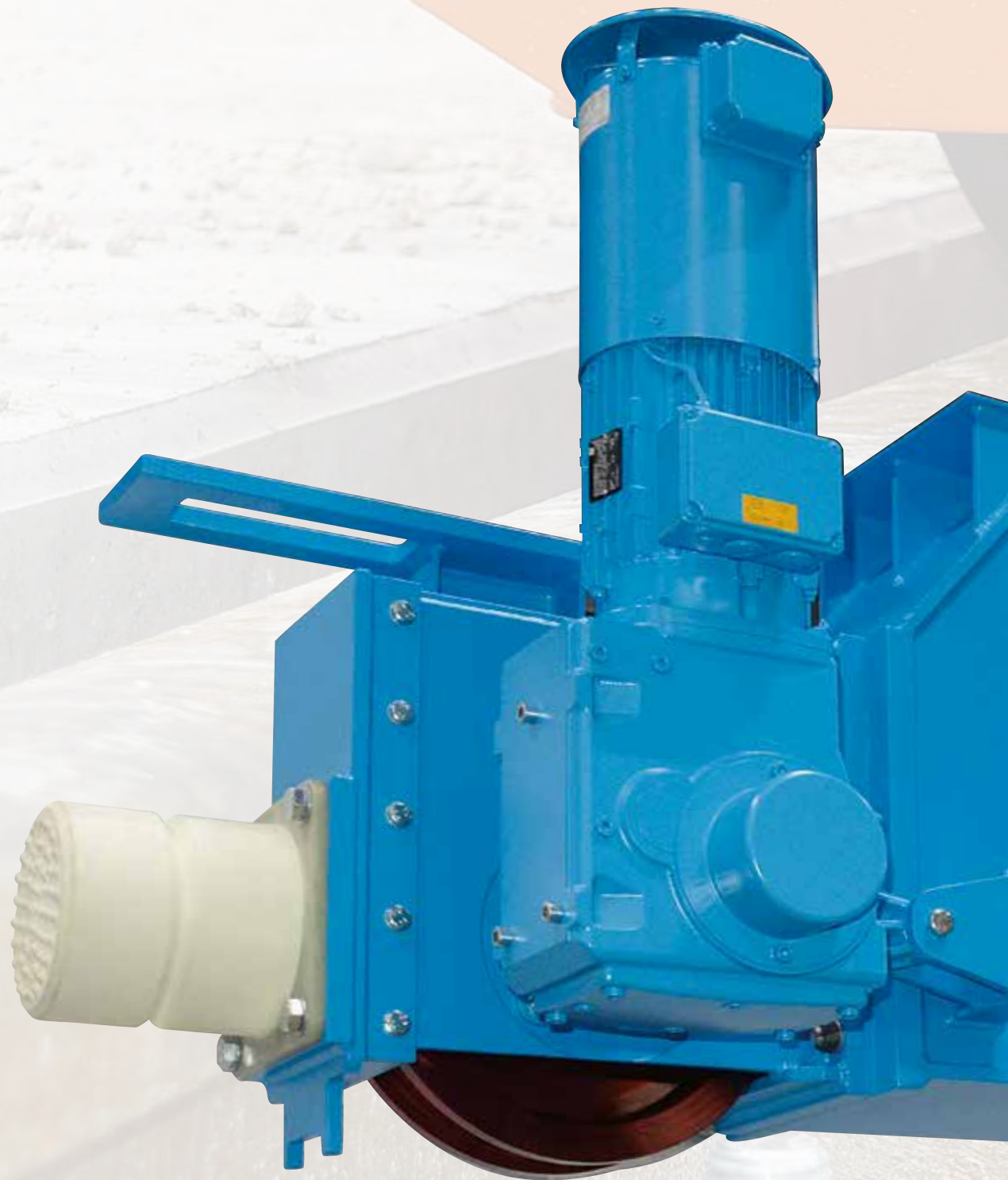
Wheel block – Type K with FG drive



Wheel block – Type K

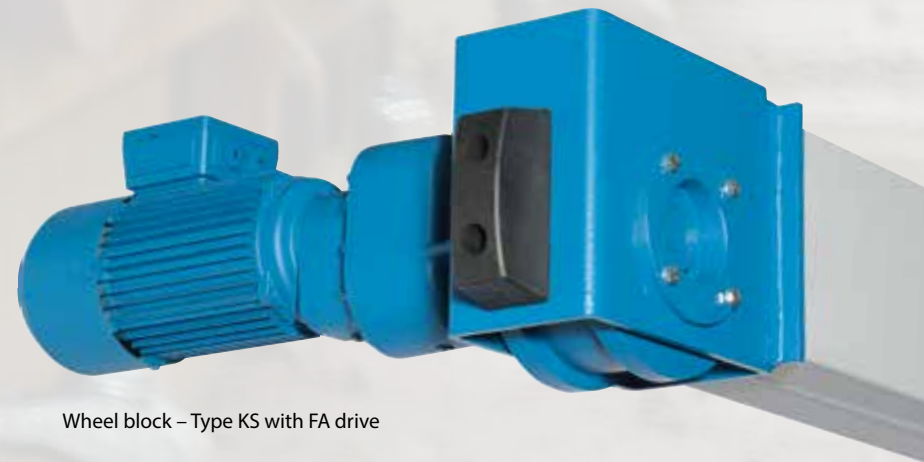


Twin suspension trolley – Type HF 220 with F drive

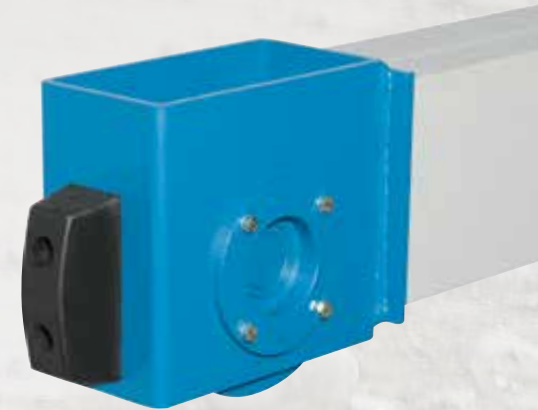


Wheel block – Type KS with WGF drive

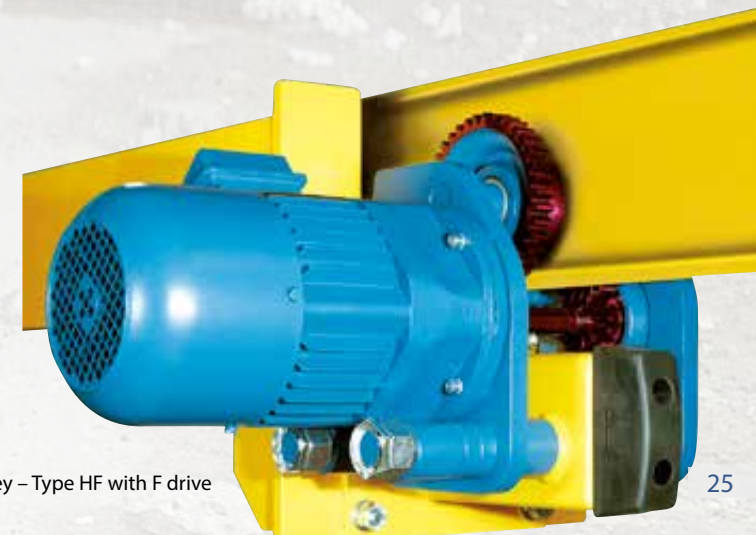




Wheel block – Type KS with FA drive



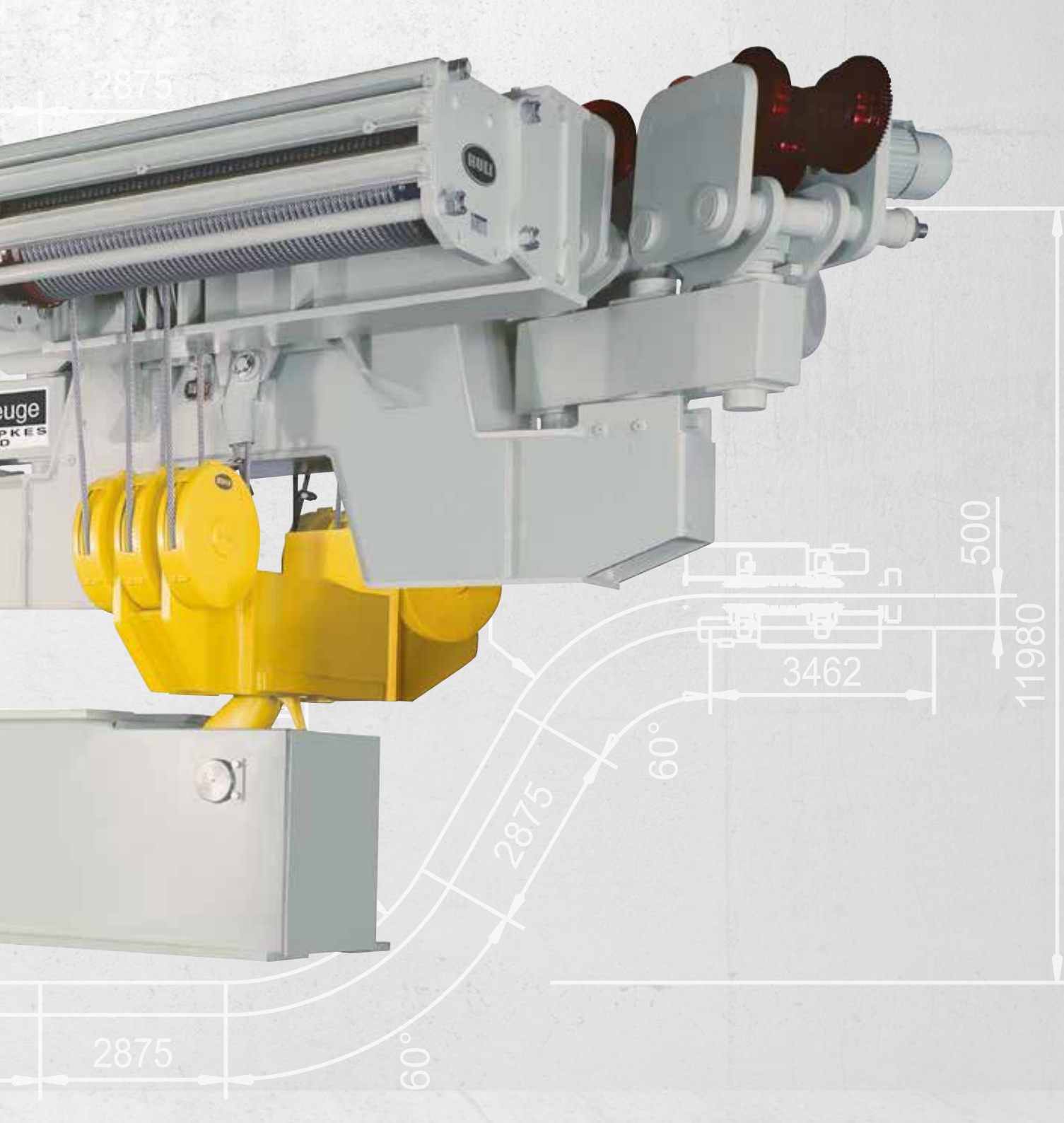
Wheel block – Type KS



Suspension trolley – Type HF with F drive



Monorail curve hoist – Type RS KEK (X+210) 2x25320 L/12



*If you need a special solution*

If standard solutions don't fit your needs, we can deliver custom-built equipment for special requirements. Please contact us – we are there for you!



*The ideal solution  
for every job*

KULI add-on equipment –  
individual and approved





## Our KULL services

We are always there for you.





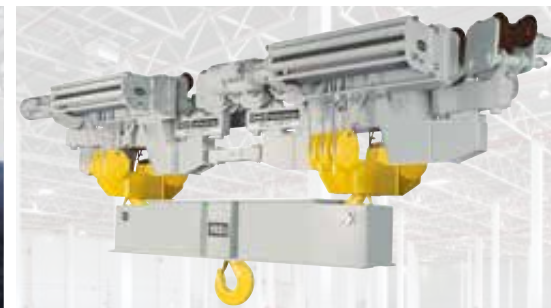
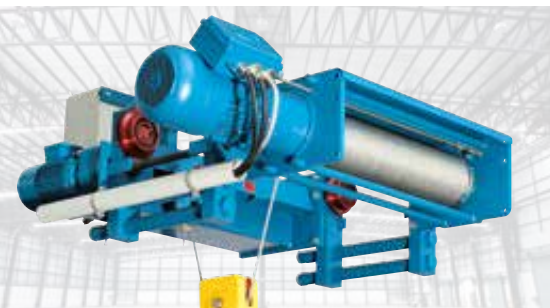
# hebezeuge HELMUT KEMPKE

KULI Hebezeuge – Helmut Kempkes GmbH

Bismarckstr. 59  
42853 Remscheid  
Germany

Tel. +49 2191 434-0  
Fax +49 2191 434-45

info@kuli.com  
www.kuli.com



*Made in Germany*